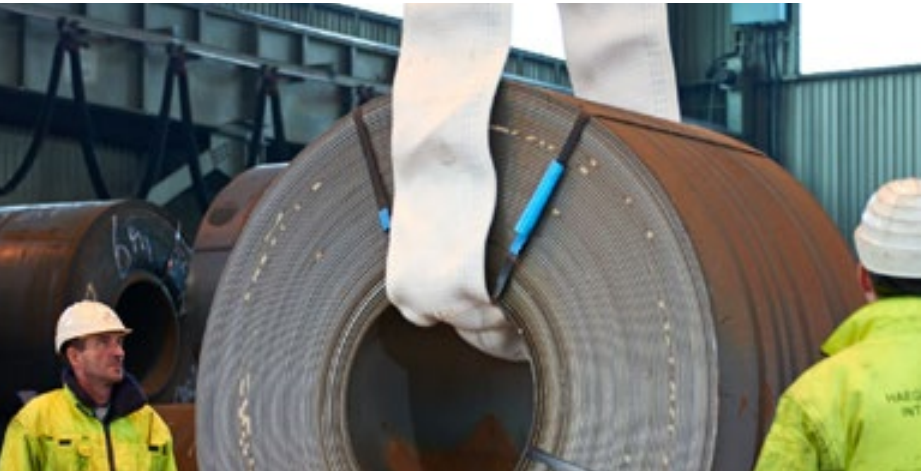


SF-1 and Clip-SC

- One-sided secutex-coating
- Easy to position
- Extremely cut-resistant
- Permanent dimensional stability



NoCut®sleeve and NoCut®pad

- Very low dead weight
- Flexible construction
- Unique ribbed structure enables turning and rotating of sharp loads
- High operational safety due to tested quality
- High cut resistance
- Sewn label with handling instructions

SF-1 and Clip-SC protective sleeves for PowerStar CS heavy-duty flat slings

secutex SF-1

The secutex SF-1 protective sleeve has been optimally adapted to the PowerStar CS heavy-duty flat sling. The contact side is secutex-coated and is therefore extremely cut-resistant. Easily clipped onto the textile lifting gear, the protective sleeve with the one-sided secutex coating equally protects the lifting gear and the load at the „sharp edges“ and rough surfaces.

secutex Clip-SC

The secutex Clip-SC is quickly attached thanks to the mounting slot at the back. It offers easy handling and short fitting times, which is why it is preferably used wherever flat slings with or without a protective sleeve are required. The secutex protective layer can be placed softly and flexibly on the load, thereby increasing the radius at the critical edges. The leverage forces are extensively distributed and the load remains undamaged.

For more information about the protective sleeves for heavy-duty flat slings see p. 78.

SF-1 suitable for	Designation SF-1	Approx. inside width [mm]	Approx. outside width [mm]	Approx. outside height [mm]	Approx. weight per running m [kg]	PowerStar CS Heavy-duty flat slings
10.000	SF-1-PCS 150	175	210	40	4,8	✓
12.000	SF-1-PCS 180	205	230	40	4,9	✓
16.000	SF-1-PCS 240	255	280	45	5,9	✓
20.000	SF-1-PCS 300	310	340	40	6,8	✓

Clip-SC suitable for	Designation SF-1	Approx. inside width [mm]	Approx. outside width [mm]	Approx. outside height [mm]	Approx. weight per running m [kg]	PowerStar CS Heavy-duty flat slings
10.000	SC-PCS 150	175	210	40	4,8	✓
12.000	SC-PCS 180	205	230	40	4,9	✓
16.000	SC-PCS 240	255	280	45	5,9	✓
20.000	SC-PCS 300	310	340	40	6,8	✓

Special designs available on request. Protective sleeves can also be fitted by the user as shown in Fig. 1.

NoCut® sleeve and NoCut® pad – cut protection from high-performance fibres

Long service life and maximum safety

NoCut® sleeve offers the perfect all-round cut protection for SpanSet heavy-duty flat slings. Simply slipped onto the flat slings, the woven protective sleeve is placed against the sharp edge of the load to protect the lifting gear. NoCut® sleeve can also be fitted by the user as shown in Figure 1.

NoCut® sleeve is supple and flexible, allowing the protective sleeve to be easily positioned on the load even in tight spaces. The design of the sleeve with equally high all-round cut resistance allows for a long service life, as it can be used on both sides, and offers the highest level of safety, as application errors are excluded. NoCut® sleeve is delivered as a prefabricated cut with trimmed edges. The protective sleeves are offered at lengths in 250-mm increments as standard.

NoCut® pad - the perfect combination

NoCut® pad is the combination of NoCut® sleeve with an internal fabric bridge that has fastening elements on both ends. NoCut® pad is mounted there where the lifting gear lies flat against the sharp edge. For the user this means: High flexibility, low material requirement and high safety when handling sharp-edged loads! The size of the edge protection can be exactly dimensioned for the danger area and precisely positioned on the sharp edge.

You can use the NoCut product finder to easily help you define what NoCut® pads or NoCut® sleeve you need for your application.

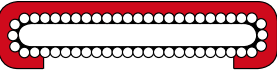
More about NoCut®

For more information about the innovative NoCut® products, see pages 80-87 of the catalogue.

NoCut sleeve suitable for	Bezeichnung NoCut sleeve	Approx. inside width [mm]	Approx. outside width [mm]	Approx. outside height [mm]	Approx. weight per running m [kg]	PowerStar CS Heavy-duty flat slings
10.000	NCS-195	195	205	13	0,4	✓
12.000	NCS-255	255	265	13	0,6	✓
16.000	NCS-315	315	325	13	0,8	✓

Special designs available on request. Protective sleeves can also be fitted by the user as shown in Fig. 1.

secutex SF-1: one contact side and the sleeve side are secutex-coated.



Clip-SC: one-sided secutex-coating, sleeve open on the backside for flexible use.

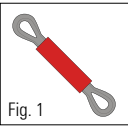
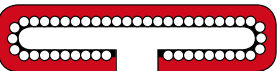
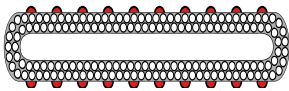


Fig. 1



Unique ribbed structure of NoCut sleeve with equally high all-round cut resistance.



NoCut pad is the combination of NoCut sleeve and fabric bridge with a fastening element

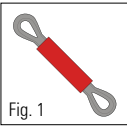
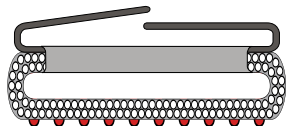


Fig. 1